



Italian Design



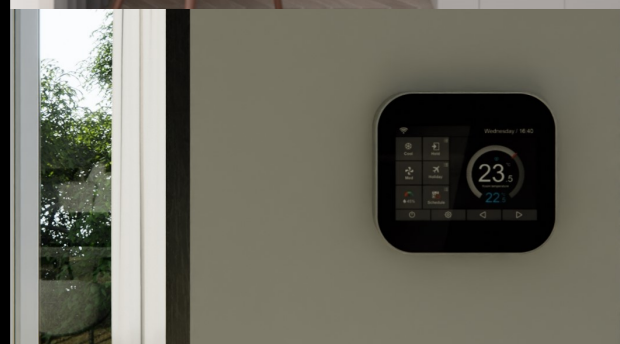
REVERSO 361°

USA-Canada

Design Fan coil

Index

- The range *Pag.3*
- Reverso FS *Pag.4*
- Reverso HW *Pag.12*
- Accessories *Pag.21*
- Why choose Reverso *Pag.28*
- Installation scheme *Pag.29*
- Price List *Pag.30*



Reverso FS

Floor standing Installation

4 sizes

Capacity from 1.1 to 4.3 kW

Heating - Cooling - Dehumidification - purification



Reverso HW

High wall Installation

3 sizes

Capacity from 1.6 to 3.8kW

Heating - Cooling - Dehumidification - purification



REVERSO FS

Floor standing fan coil

Silver edition



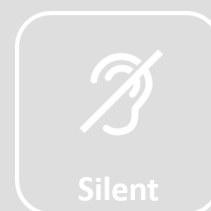
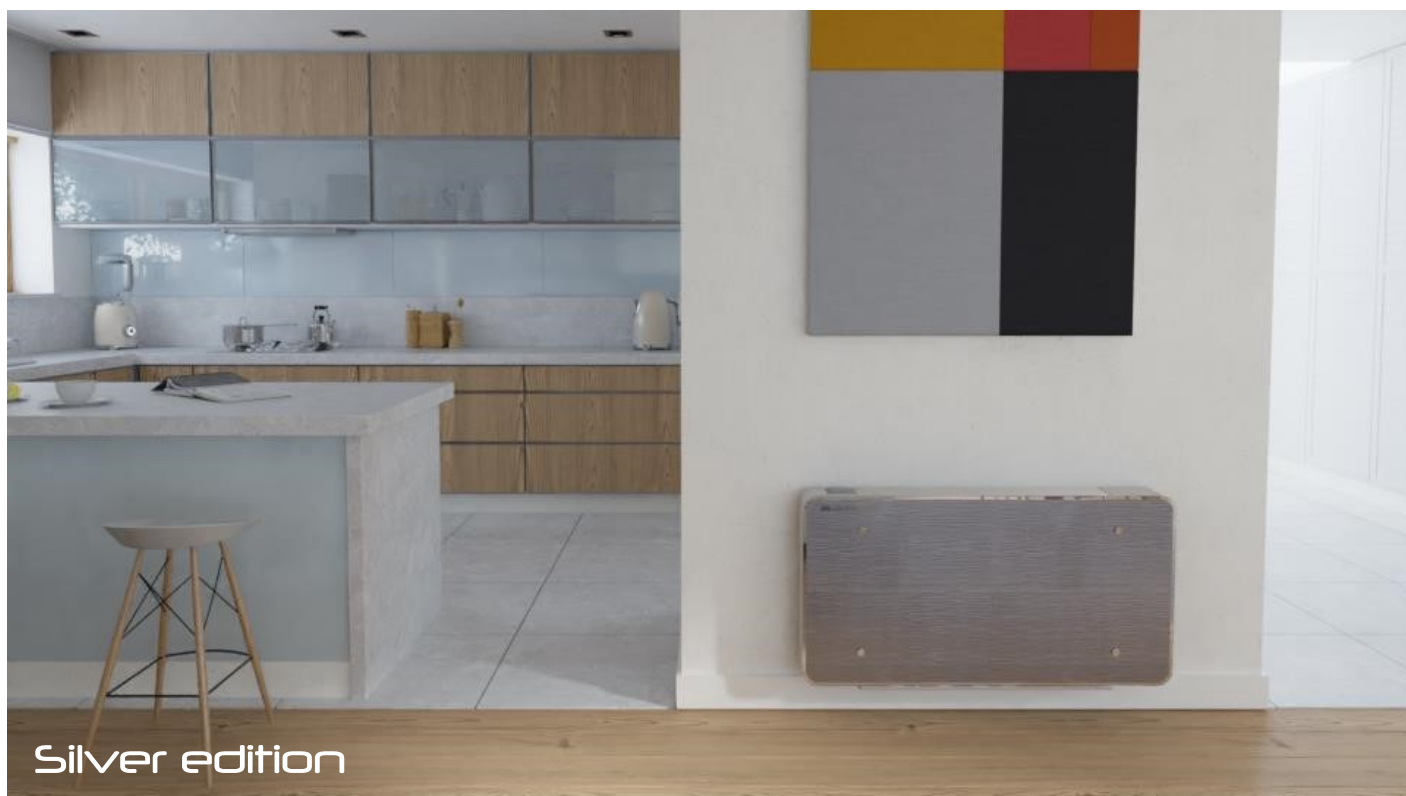
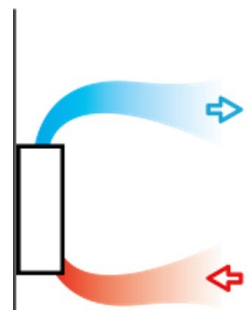
Italian Design

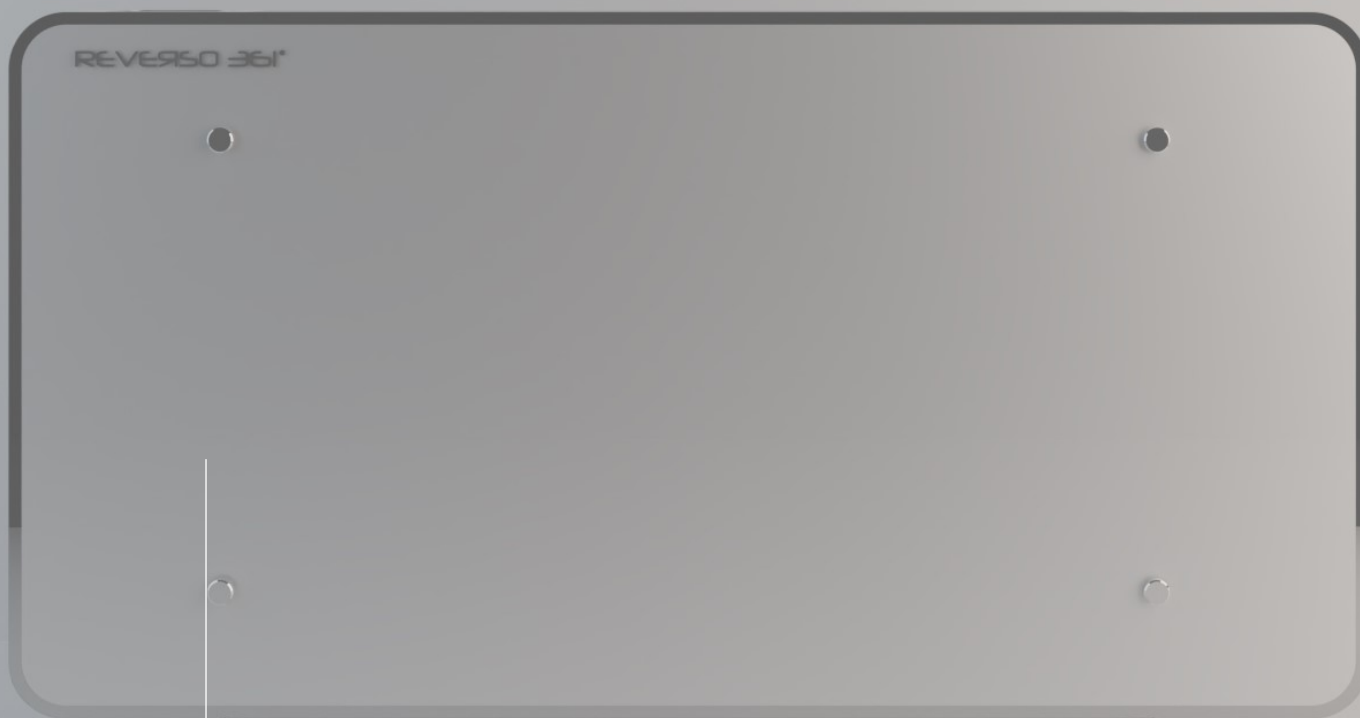
Reverso FS is the hydronic fan coil for low wall installation. The features that distinguish it from products of the same category are: • Real residential design , Super thin , only 12 cm thick • Minimum silence below the audible threshold, 20 dB (A) • DC Inverter technology • Low power consumption, only 4 Watt • Modern design.

Double Crystal front and back on request • Front panel in tempered crystal • Pleated stainless steel filters with unlimited duration • Tangential fan in aluminium for greater efficiency • Controls on the machine or on the wall • Hydraulic or electric connections on the right and left on the same product • WiFi connection for Smart home automation .

Why REVERSO FS ?

Reverso FS is the hydronic fan coil with slim and modern design to have a perfect match with home furniture , it is as silent as radiant system and efficient thanks to DC Inverter motor ,it is used as primary system for the heating , cooling , dehumidification and air purifying . One product to climatize the house / office all year along with the maximum comfort .FS series is the perfect solution to replace old radiator with water pipes 12 mm diameter. It's a good match with air -water heating pump because optimize SCOP .





Frontal panel

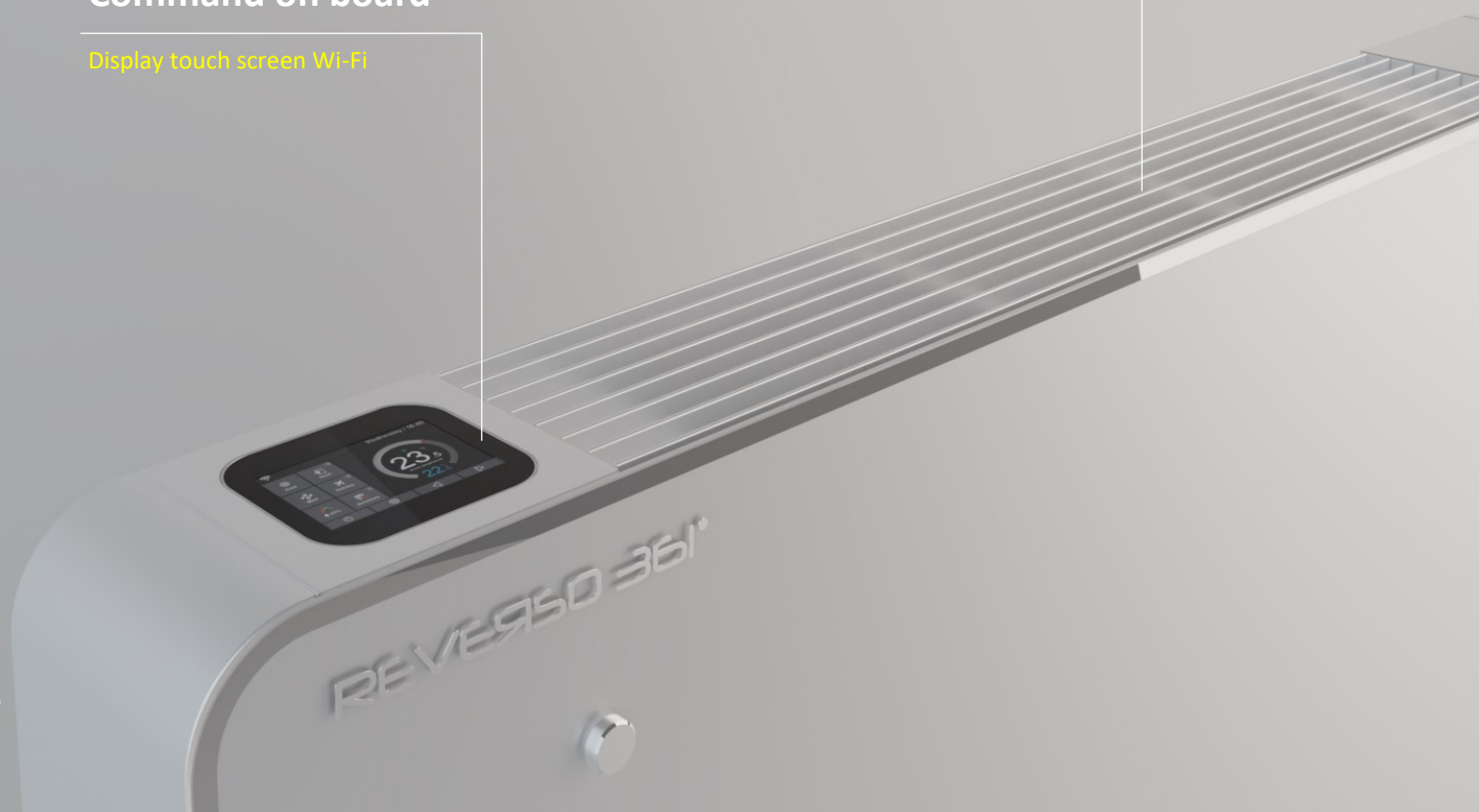
Tempered crystal
back silk printed

Top grill

Extruded aluminium painted

Command on board

Display touch screen Wi-Fi





DC Inverter motor

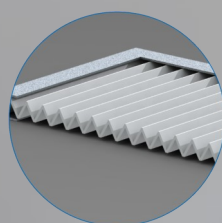
Aluminium cross blade
Low consumption DC inverter motor

Strong body

Body in galvanized + painted steel
Steel thickness 0.8 mm

Microwave Stainless steel filter

Microwave filter in stainless steel
Double surface to traditional filters
Reduced load losses and fouling factor



Technical Data

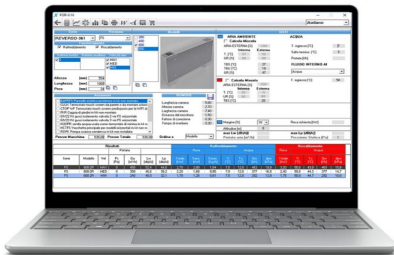
Performance 2-4 pipes

Model			FS 200	FS 400	FS 600	FS 800	
(1)	Cooling capacity	45°F -54 °F	BTU/h (kW)	3033 (0,88)	6176 (1,81)	9213 (2,7)	11533 (3,38)
(1)	Sensible capacity	45°F -54 °F	BTU/h (kW)	2354 (0,69)	4606 (1,35)	6824 (2,00)	9213 (2,70)
(1)	Water flow rate MAX	45°F -54 °F/122 °F	GPM (l/h)	0,665 (151)	1,369 (311)	2,039 (463)	2,554 (580)
(1)	Water drop fow	45°F -54 °F/122 °F	Ft Hd (kPa)	4,38 (13,1)	2,74 (8,2)	6,39 (19)	6,26 (18,7)
(2)	Heating capacity MAX	122 °F	BTU/h (kW)	3753 (1,1)	8189 (2,4)	10919 (3,2)	14433 (4,23)
(2)	Static heating capacity	122 °F	BTU/h (kW)	751 (0,22)	853 (0,25)	1024 (0,3)	1297 (0,38)
Hydraulic data							
Exchanger water content			gal (liter)	0,087 (0,33)	0,155 (0,59)	0,224 (0,85)	0,29 (1,11)
Hydraulic connection			NPT thread	1/2 NPT			3/4 NPT
Aeraulic data							
Supermax air flow (2000 rpm)			CFM (m3/h)	148 (250)	230 (390)	300 (510)	364 (620)
Max air flow			CFM (m3/h)	106 (180)	185 (315)	265 (450)	318 (540)
Med air flow			CFM (m3/h)	71 (120)	135 (230)	206 (350)	265 (450)
Min air flow			CFM (m3/h)	47 (80)	91 (155)	141 (240)	182 (310)
Static air flow (fan off)			CFM (m3/h)	5,8 (10)	10,6 (18)	14,7 (25)	18,8 (32)
(***)	SPL noise level (min-max)		db(A)	20,5-34,3	21,6-35,2	23,5-35,2	21,7-36,3
(***)	LWA sound power level		db(A)	27,5-51,3	38,6-52,2	40,5-52,4	38,7-53,3
Electric data							
Alimentation			V-Hz-Ph	115 V - 60 Hz - 1Ph			
Power supply			watt	3-12	4-13	5-14	8-17
Dimension							
Lenght			inch (mm)	23 13/16 (681)	34 3/8 (873)	41 15/16 (1065)	49 1/2 (1257)
Height			inch (mm)	21 3/4 (553)			
Deep			inch (mm)	4 13/16 (120)			
Features							
Motor type and driver				DC Inverter			
Fan				Aluminum cross fan			
Top grill				Extruded alluminium painted			
Inlet filter				Stainless steel microwave supplied as standard			
Frontal panel				tempered crystal			
Water probe				supplied as standard			
Machine structure				Galvanized and painted steel			
Optional Accessories							
Touch screen Wi-Fi Thermostat				Obbligatory (ON-OFF or 0-10 VDC)			
3 ways by pass valves kit (2-4 pipes)				Optional			
2 ways valves kit (2 pipes)				Optional			
2 ways 0-10 VDC modulating valves kit (2 pipes)				Optional			
Antivirus - anti bacteria filter				Optional			
Feet				Optional			
Back pannel in Crystal				Optional			
Packing data							
Single box lenght			inch (mm)	29,09 (739)	36,65 (931)	44,21 (1123)	51,77 (1315)
Single box height			inch (mm)	17,87 (454)			
Deep box dimension			inch (mm)	7,20 (183)			
Gross weight			lbs (Kg)	41,88 (19)	48,50 (22)	55,11 (25)	61,72 (28)
Net weight			lbs (Kg)	39,68 (18)	46,29 (21)	52,91 (24)	59,52 (27)

(1) Water temperature 45-54 °F (7/12 °C) , room ambient 80,6°F d.b and 66,2 w.b.(27 °C b.s. e 19 °C b.u.) EN 1397 EUROVENT AHRI

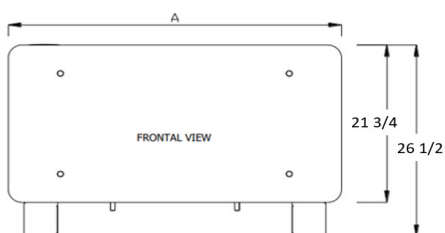
(2) Water temperature 122 °F (50 °C) ambient temperature 68°F d.b and 15 w.b (20 °C b.s. e 15°C b.u.) EN 1397 EUROVENT AHRI

(***) SPL tested at 1m distance , conform to ISO7779



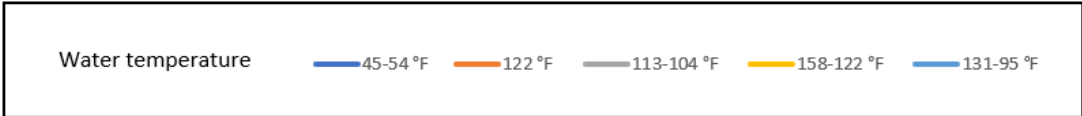
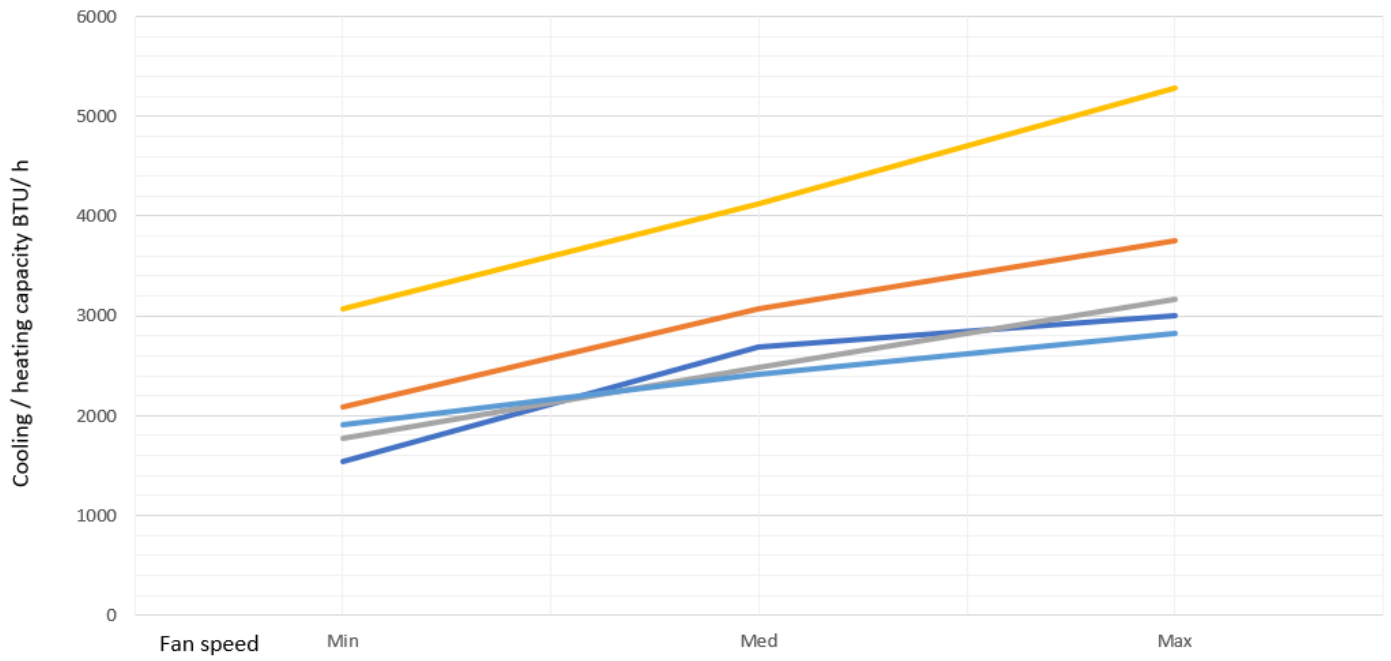
Ask to our sales department the free software to do Reverso fan coil simulation performance with different water and environment condition .

Machine dimensions

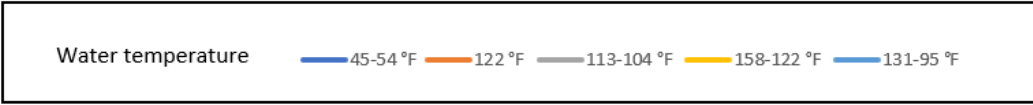
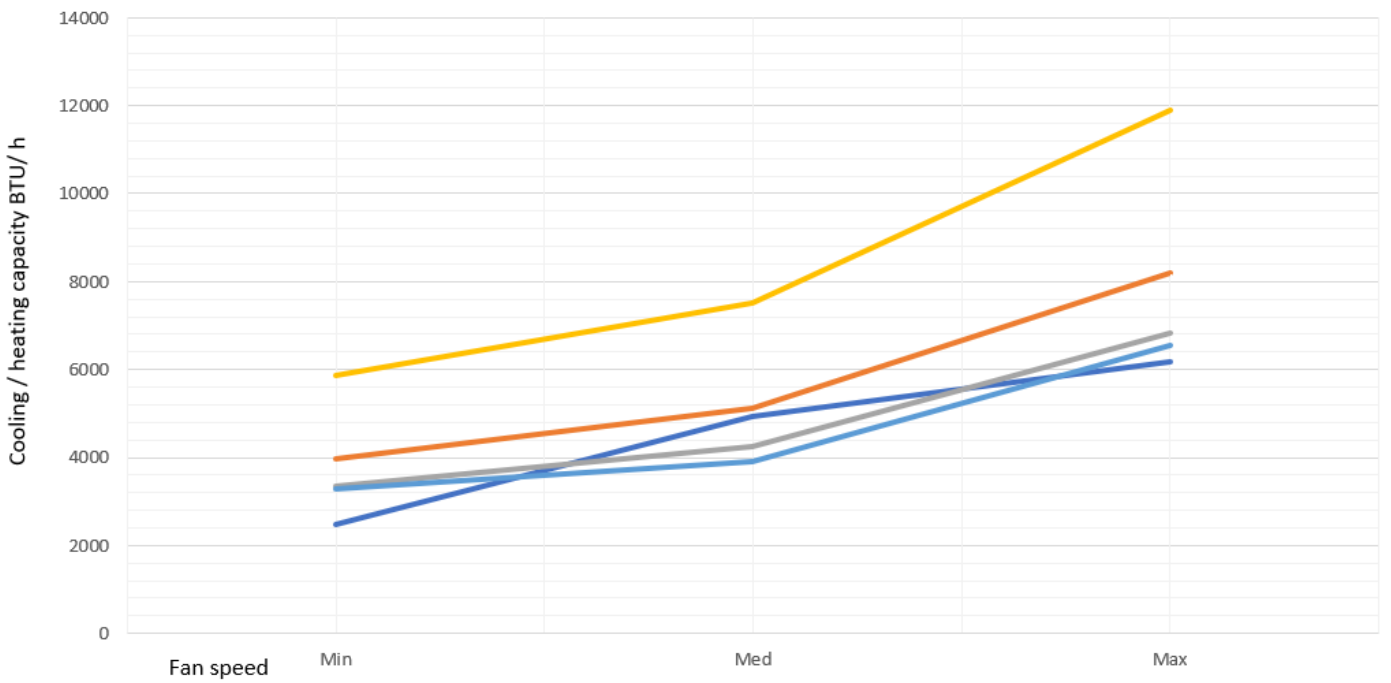


	200	400	600	800
A (inch)	26 13/16	34 3/8	41 15/16	49 1/2
Deep (inch)	4,72			
Weight (lbs)	39,68	46,29	52,91	59,52

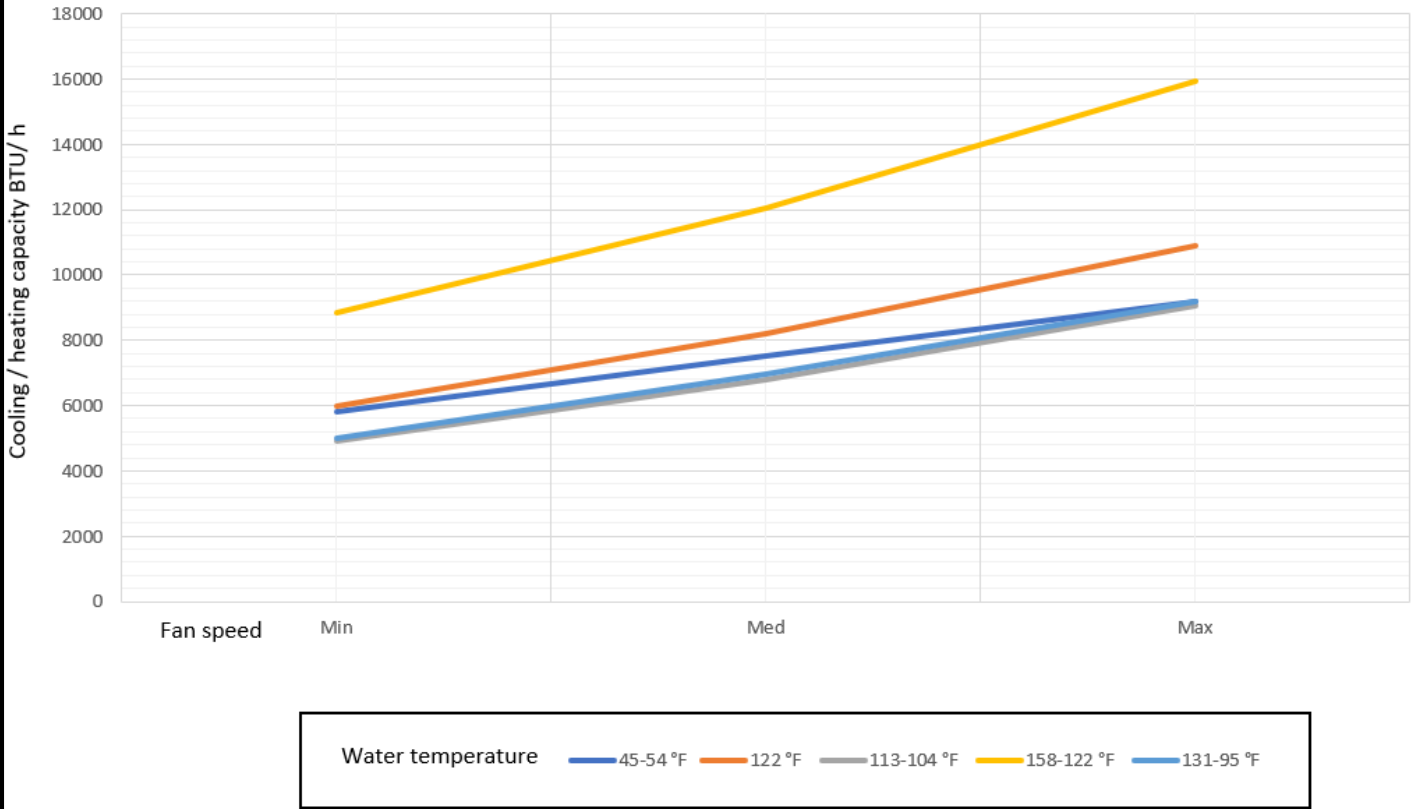
Reverso FS 200



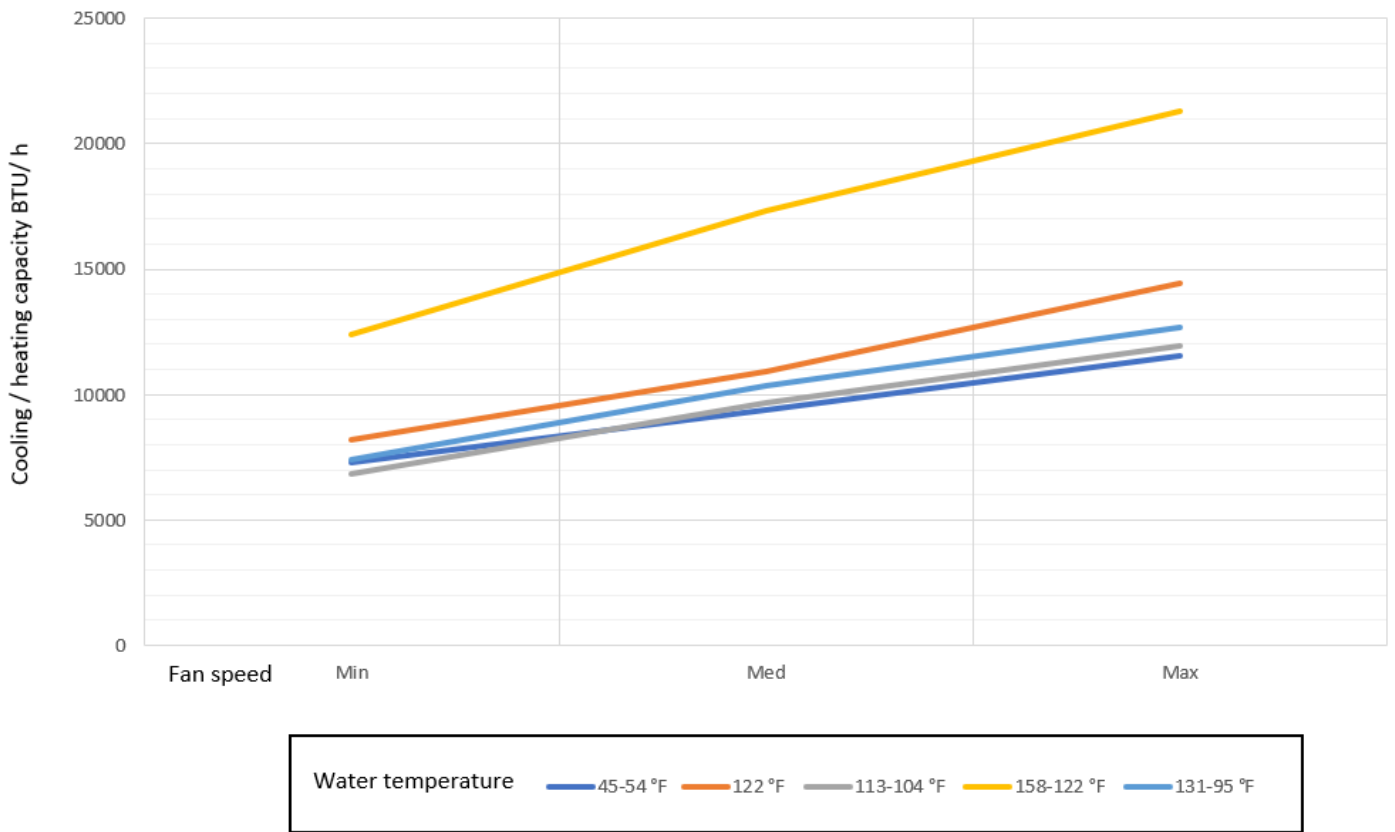
Reverso FS 400



Reverso FS 600



Reverso FS 800



REVERSO FS

Floor standing fan coil

White edition



Italian Design

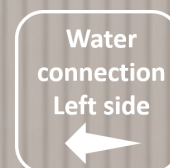
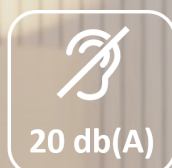
Available also in white colour

Italian Design

REVERSO HW

Silver edition

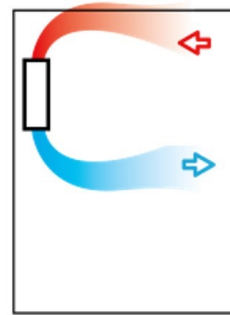
High wall fan coil



Reverso HW is the hydronic fan coil for high wall installation. The features that distinguish it from products of the same category are: • Super thin , only 12 cm thick • Minimum silence below the audible threshold, 20 dB (A) • DC Inverter technology • Low power consumption, only 4 Watt • Modern design. Front panel in tempered crystal • Pleated stainless steel filters with unlimited duration • Tangential fan in aluminium for greater efficiency • Controls with remote control or optional on the wall • Hydraulic connections on the left side .

Why REVERSO HW ?

Reverso HW is the hydronic fan coil high wall installation , with slim and modern design to have a perfect match with home furniture , it's a perfect match with radiant system for cooling it's efficient thanks to DC Inverter motor , is possible to use like primary system for the heating , cooling , dehumidification and air purifying . One product to climatize the house / office all the year along the maximum comfort .HW line is studied to use for high wall installation optimizing its position.





Frontal panel

Tempered crystal
Back silk printed

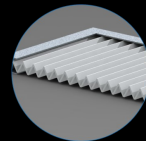
LCD display

2 digit display
Remote control receiver
Remote control as series

12 cm thick

Microwave Stainless steel filter

Microwave filter in stainless steel
Double surface to traditional filters
Reduced load losses
and fouling factor





DC Inverter motor

Aluminium cross blade
Low consumption DC inverter motor

Bottom flap

Extruded aluminium painted



Strong body

Body in galvanized + painted steel
Steel thickness 0.8 mm

Technical Data

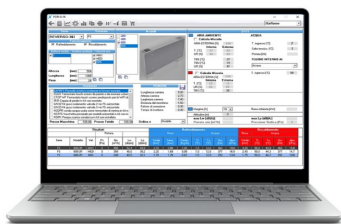
Performance 2 pipes

Model				HW 400	HW 600	HW 800
(1)	Cooling capacity	45°F -54 °F	BTU/h (kW)	4095 (1,2)	5801 (1,7)	8360 (2,45)
(1)	Sensible capacity	45°F -54 °F	BTU/h (kW)	3037 (0,85)	5050 (1,45)	7677 (2,15)
(1)	Water flow rate MAX	45°F -54 °F/122 °F	GPM (l/h)	0,907 (206)	1,286 (292)	1,849 (420)
(1)	Water drop fow	45°F -54 °F/122 °F	Ft Hd (kPa)	2,3 (7)	0,8 (2,5)	3,3 (10)
(2)	Heating capacity MAX	122 °F	BTU/h (kW)	5732 (1,68)	8360 (2,45)	11260 (3,3)
Hydraulic data						
	Exchanger water content		gal (liter)	0,079 (0,3)	0,11 (0,43)	0,147 (0,56)
	Hydraulic connection		NPT thread	1/2 NPT		3/4 NPT
Aeraulic data						
	Supermax air flow (2000 rpm)		CFM (m3/h)	218 (370)	290 (492)	348 (592)
	Max air flow		CFM (m3/h)	185 (315)	265 (450)	318 (540)
	Med air flow		CFM (m3/h)	135 (230)	206 (350)	265 (430)
	Min air flow		CFM (m3/h)	91 (155)	141 (240)	182 (310)
(***)	SPL noise level (min-max)		db(A)	23-37,1	23,4-38,3	25-39,1
(***)	LWA sound power level		db(A)	40-54,1	40,4-55,3	42-56,1
Electric data						
	Alimentation		V-Hz-Ph	115 V - 60 Hz - 1Ph		
	Power supply (MIN-MAX) / potenza elettrica (min-max)		watt	4-11	5-14	8-17
Dimension / Dimensioni						
	Lenght		inch (mm)	34 3/8 (873)	41 15/16 (1065)	49 1/2 (1257)
	Height		inch (mm)	15 1/16 (383)		
	Deep		inch (mm)	4 13/16 (120)		
Features						
	Motor type and driver			DC Inverter		
	Fan			Alluminum cross fan		
	Bottom flaps			Extruded alluminium painted		
	Inlet filter			Stainless steel microwave		
	Frontal panel			Tempered crystal		
	Water probe			supplied as standard		
	Machine structure			Galvanized and painted steel		
Optional Accessories						
	Toouch screen Wi-Fi Thermostat - Termostato wifi Touch			As optional (ON-OFF or 0-10 VDC)		
	3 ways by pass valves kit (2-4 pipes)			Optional		
	2 ways valves kit (2 pipes)			Optional		
	Antivirus - anti bacteria filter			Optional		
Packing data						
	Single box lenght		V-Hz-Ph	36,65 (931)	44,21 (1123)	51,77 (1315)
	Single box height		V-Hz-Ph	17,874 (454)		
	Deep box dimension		V-Hz-Ph	7,20 (183)		
	Gross weight		lbs (Kg)	37,47 (17)	39,68 (18)	46,29 (21)
	Net weight		lbs (Kg)	35,27 (16)	37,47 (17)	44,1 (20)

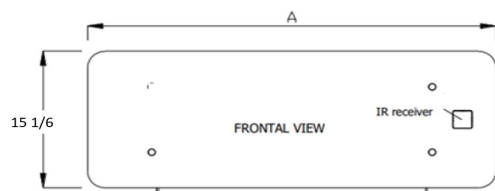
(1) Water temperature 45-54 °F (7/12 °C) , room ambient 80,6°F d.b and 66,2 w.b.(27 °C b.s. e 19 °C b.u.) EN 1397 EUROVENT AHRI

(2) Water temperature 122 °F (50 °C) ambient temperature 68°F d.b and 15 w.b (20 °C b.s. e 15°C b.u.) EN 1397 EUROVENT AHRI

(***) SPL tested at 1m distance , conform to ISO7779

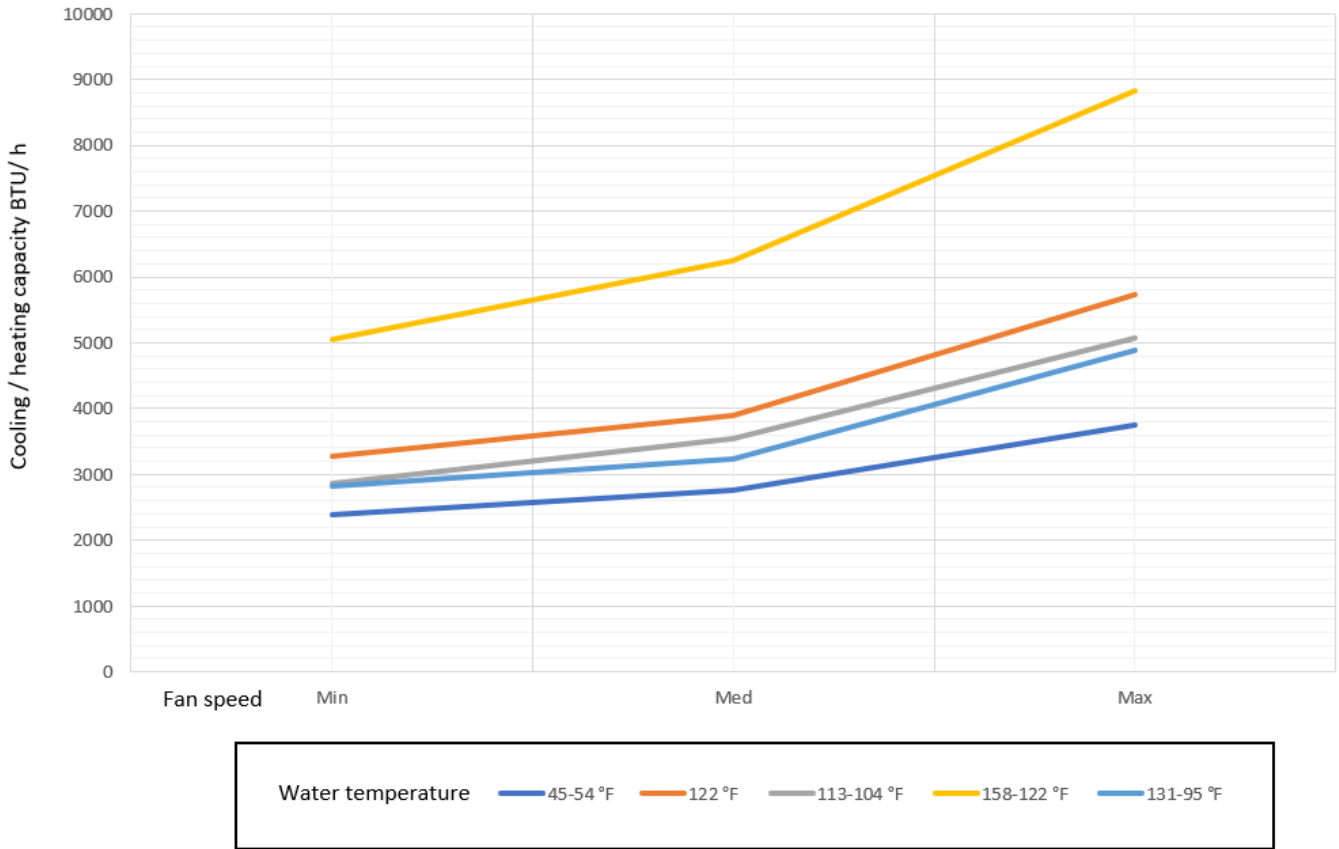


Ask to our sales department the free software to do Reverso fan coil simulation performance with different water and environment condition .

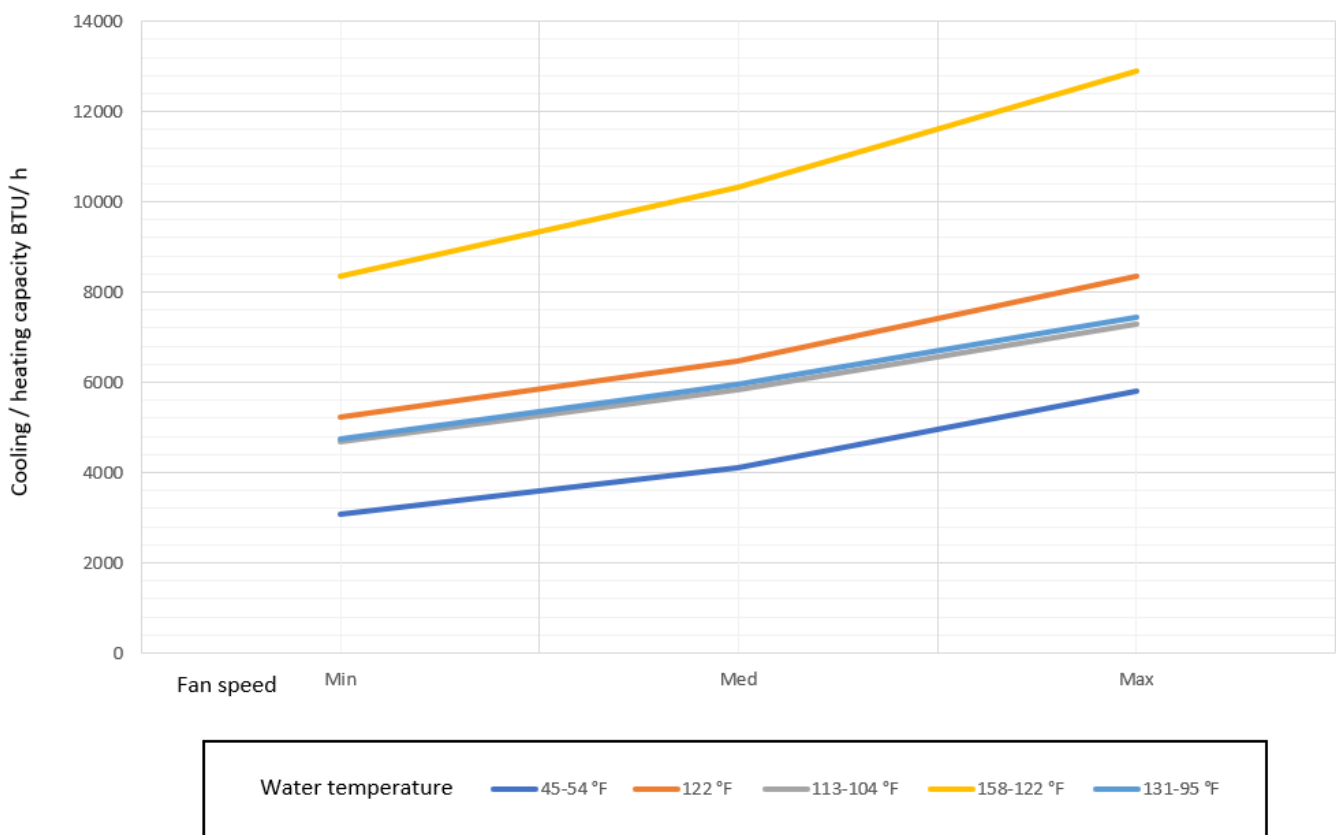


	400	600	800
A (inch)	34 3/8	41 15/16	49 1/2
Deep (inch)	4,72		
Weight (lbs)	35,27	37,47	44,1

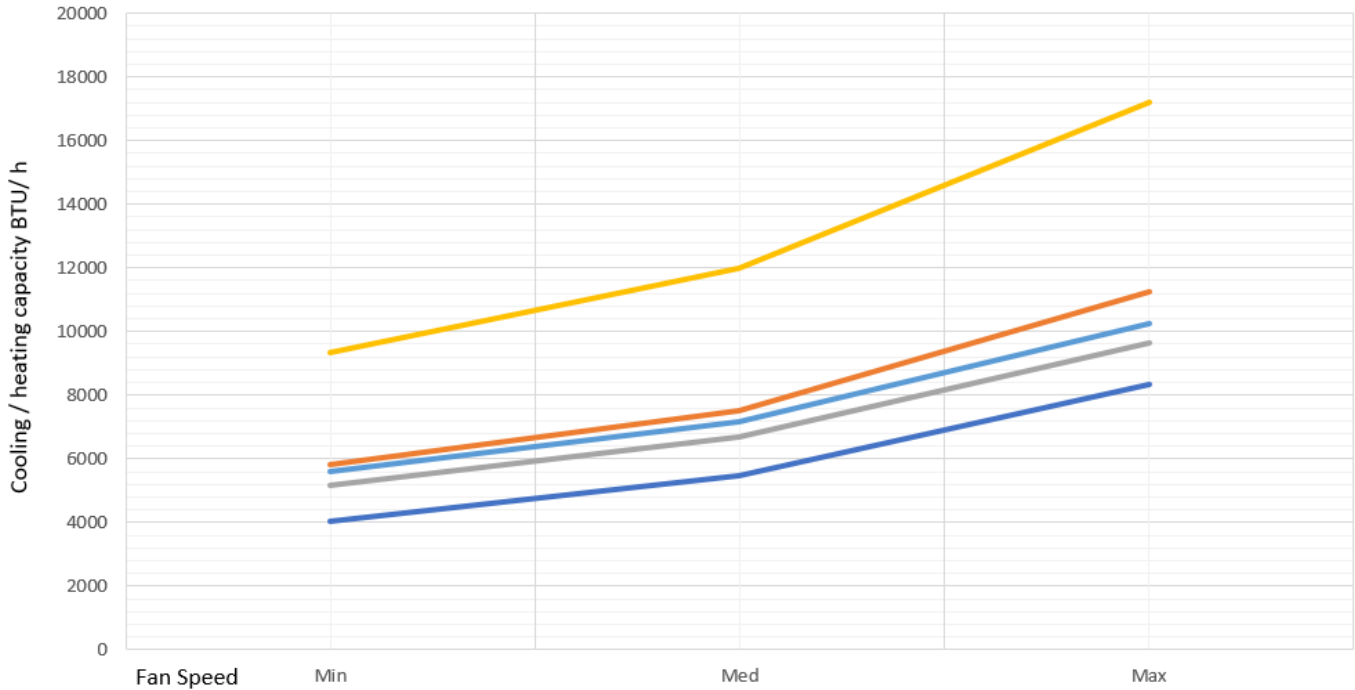
Reverso HW 400



Reverso HW 600



Reverso HW 800



Water temperature — 45-54 °F — 122 °F — 113-104 °F — 158-122 °F — 131-95 °F



REVERSO HW

White edition

High wall fan coil



Italian Design



12 CM



Available also white colour

REVERSO HW

White edition

High wall fan coil



Italian Design



Available also white colour

Accessories

- *Controls*
- *Remote control*
- *Valves kit*
- *Feet*
- *Back panel*
- *Anti virus filter*

Controls

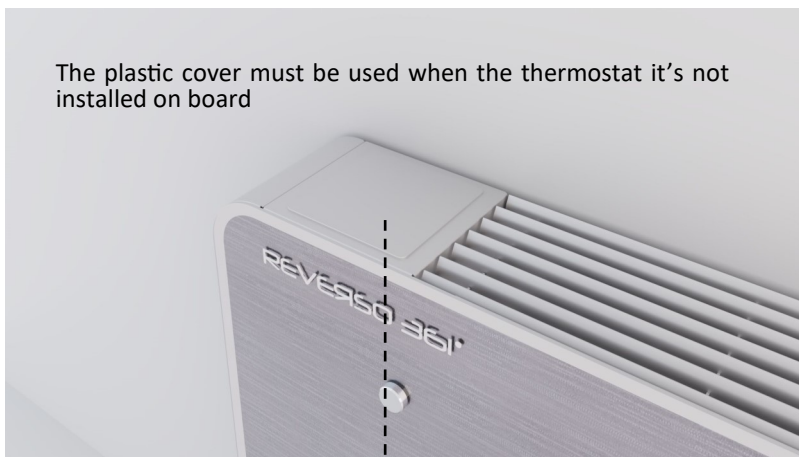
2 and 4 pipes system

FS Line required

HW as optional

Only one control , for both necessities .

The plastic cover must be used when the thermostat it's not installed on board



FS line is sold with or without control and the installer can decide if manage the machine stand alone or master slave net . The control **CTOP WF** could be installed on board or on the wall and is available for ON-OFF or 0-10 VDC modulating valves .



HW Line

The same control can be used also for HW line when is installed on the wall . When we use this control we lost the remote control function .



CTOP-WF-24 VAC ON-OFF

- Wi-Fi connection
- 3.5" TFT colour touch screen
- 24 Vac Thermostat 2& 4 pipes
- 3 fan speed control and ON-OFF valve control
- F° and C° display temperature
- Humidity sensor
- Weekly program
- Record energy consumption

CTOP-WF-24 VAC 0-10 VDC

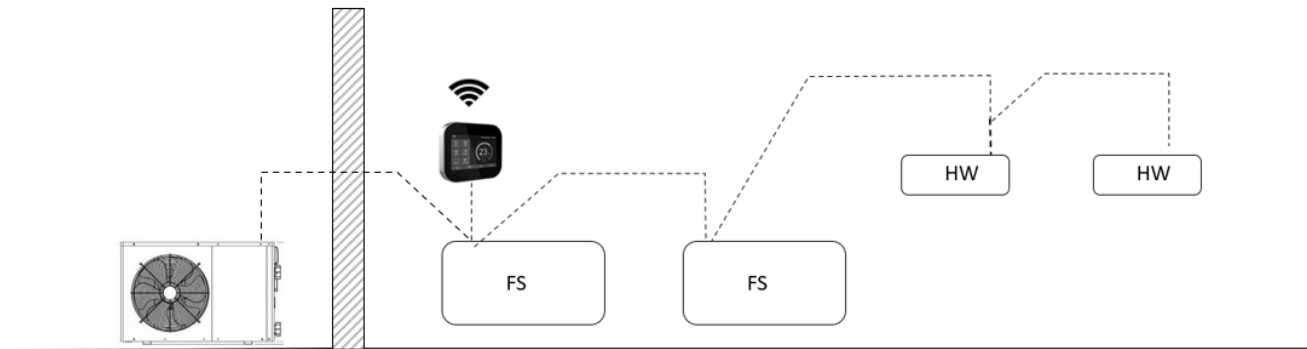
Modulating

- Wi-Fi connection
- 3.5" TFT colour touch screen
- 24 Vac Thermostat 2& 4 pipes
- 3 fan speed control and 0-10 V valve control
- F° and C° display temperature
- Humidity sensor
- Weekly program
- Record energy consumption



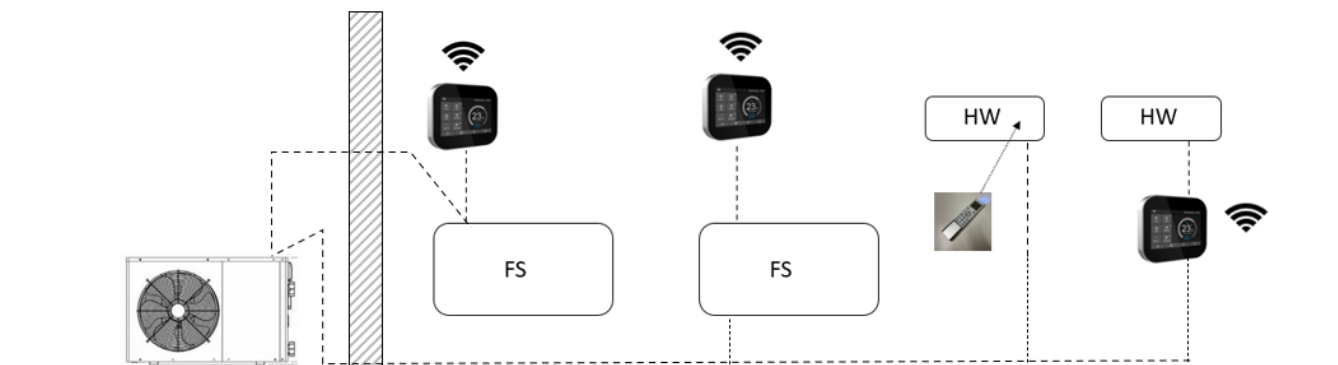
Master slave control

With only one control is possible to manage a machines net over 200 fan coils. This is economic solution because it's possible to avoid to install valves



Stand Alone control

Each single machine is managed from one single control , valves are obligatory .



Controls

HW Line supplied as standard (no Wi-Fi)

LCD Display



It's supplied as standard on all HW series.

The remote control manage all machine functions , but no Wi-Fi function is available with the remote control .

Soft back light display for comfortable night vision

Frontal light for night help

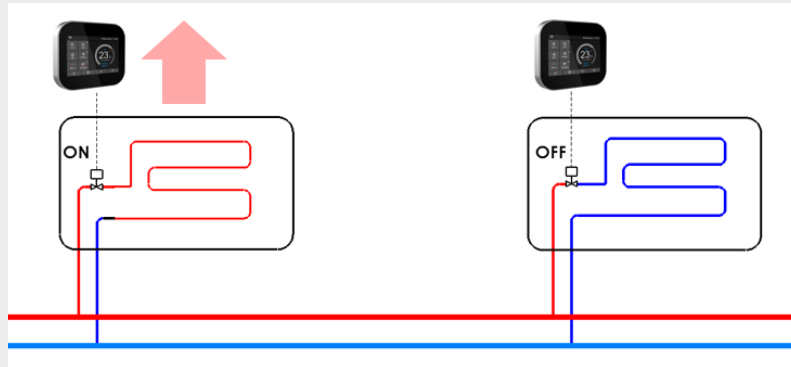
F° and C° temperature display are available

Timer and clock wise

Note : If the Wi - Fi connection needs , it's necessary to install wall pad control CTOP WF.

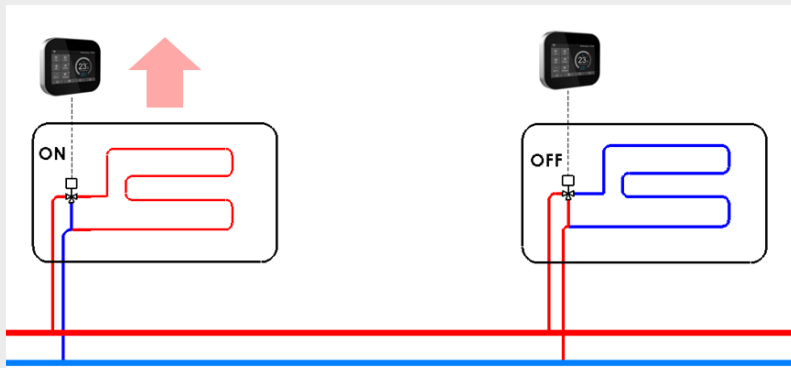
Valves Kits All valves kit are supplied with connection copper pipes and NPT tread

2 ports valve / 2 pipes - *FS and HW series*



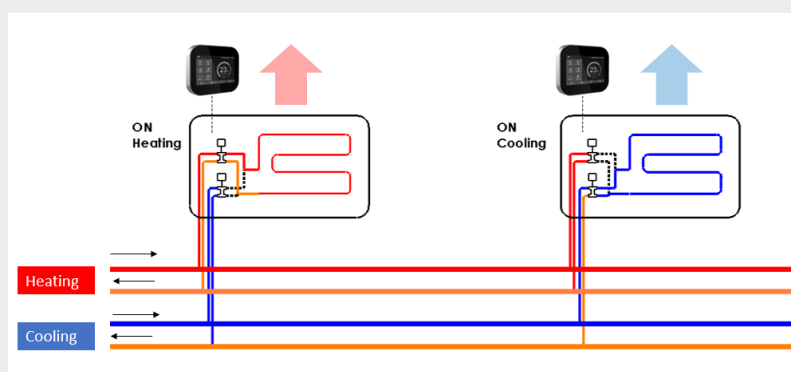
Available for all the range FS—HW ; for 2 port valves it's suggested the by pass in the water collector and modulating water pump . With this valve use control **CTOPWF24VAC ON-OFF**

3 ports valve / 2 pipes - *FS and HW series*



Available for all the range FS—HW. 3 port valve It's suggested for 90 % of the installations with on-off or modulating water pump . With this valve use control **CTOPWF24VAC ON-OFF**

3 ports valve / 4 pipes - *only FS series no HW not installed*

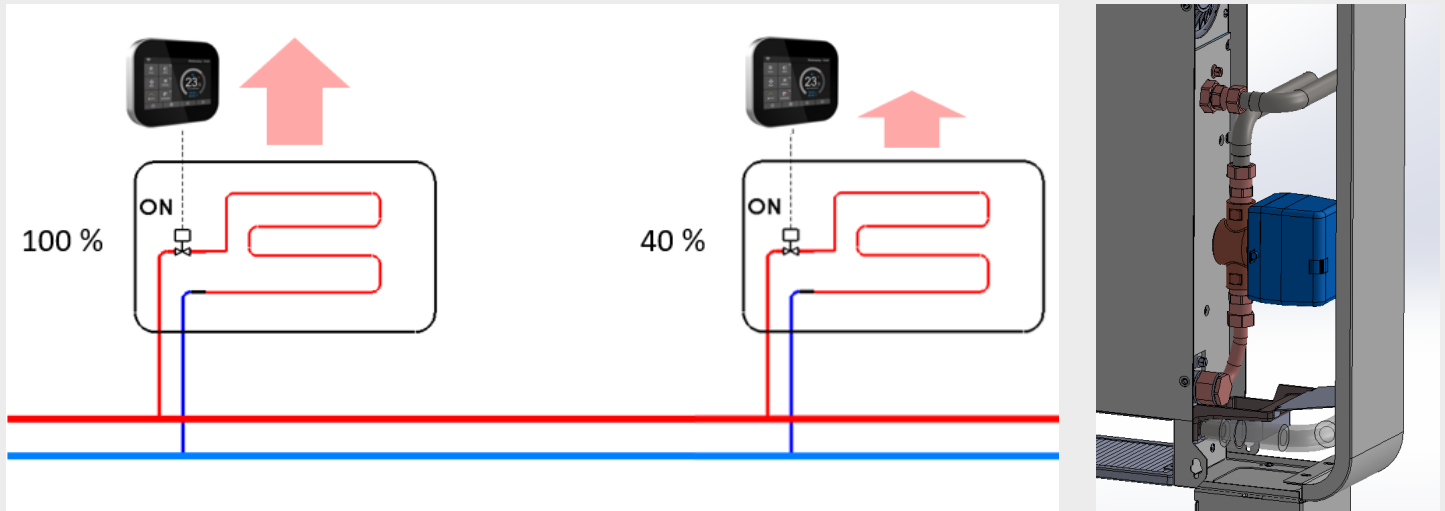


Available only for all FS range to heat and cool in the same time with 4 pipes system . With this valve use control **CTOPWF24VAC ON-OFF**

Valves Kits

All valves kit are supplied with connection copper pipes and NPT tread

2 ports valve 0-10 V Modulating / 2 pipes - *FS series only*



Available for FS range only .

it's suggested for 2 port valves the by pass in the water collector and modulating water pump . With this valve use control [CTOPWF24VAC 0-10 VDC Modulating .](#)

Feet

FS supplied as optional



For FS , feet are supplied as optional not installed . This accessory is useful when it is not possible to install the machine on the wall , for example in front of the window shop , or to cover the pipes and electric connection coming from the floor or floating floor .

Back panel made in Crystal

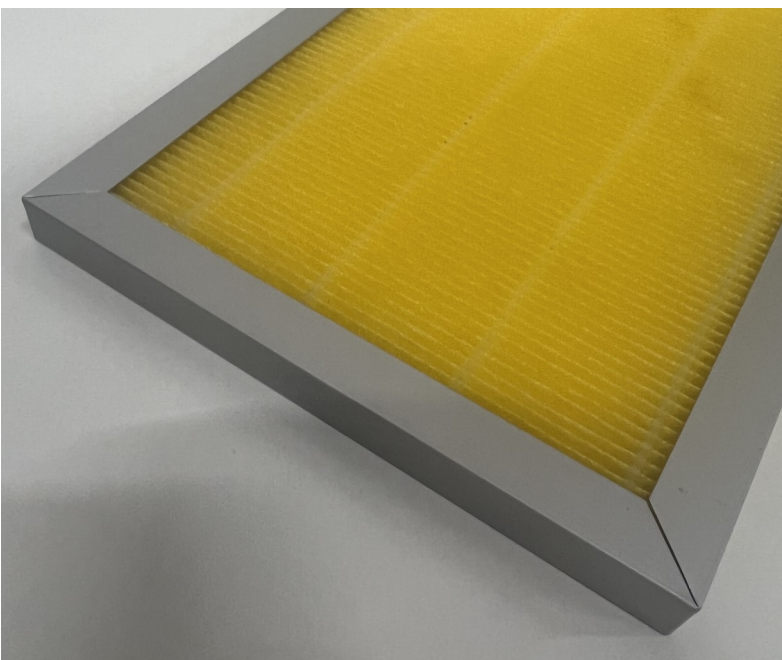
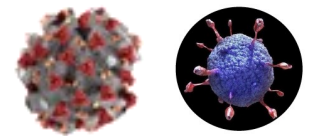
FS - supplied as optional

The back panel is made in tempered crystal like the frontal panel ; this accessory is used when the fan coils is installed in front of glass or window shop to have perfect look .



Anti bacteria / anti virus filters

FS/HW supplied as optional



The anti-bacterial and anti-virus air purification membrane material is a new type of anti-bacterial and anti-virus material developed by Jiangsu Jiulang High-Tech CO.,LTD and National Engineering Research Center For Special Separation Membrane under the support of Ministry of Science and Technology of China key project of "Science and Technology for Economy 2020".

High performance tested and certificate against Virus , Bacteria , pollution .

Efficacy tested against the COVID-2 SARS virus

REPORT FOR ANALYSIS

Micro inspection 2020-024

2/3

Result of anti SARS-CoV-2 activity of Anti-Bacterial and Anti-Virus Air Purification Membrane Material

Test sample	1	2	3
CT value	40	40	40
	40	35.58	35.99
	35.9	40	36.18
	40	36.24	35.57
Control sample	1	2	3
CT value	19.51	18.68	19.4
	18.87	18.42	19.1
	18.66	19.18	18.76
	18.57	19.9	19.41
Inhibition rate	> 99.9%	> 99.9%	> 99.9%

Note: No gene amplification is represented by CT = 40

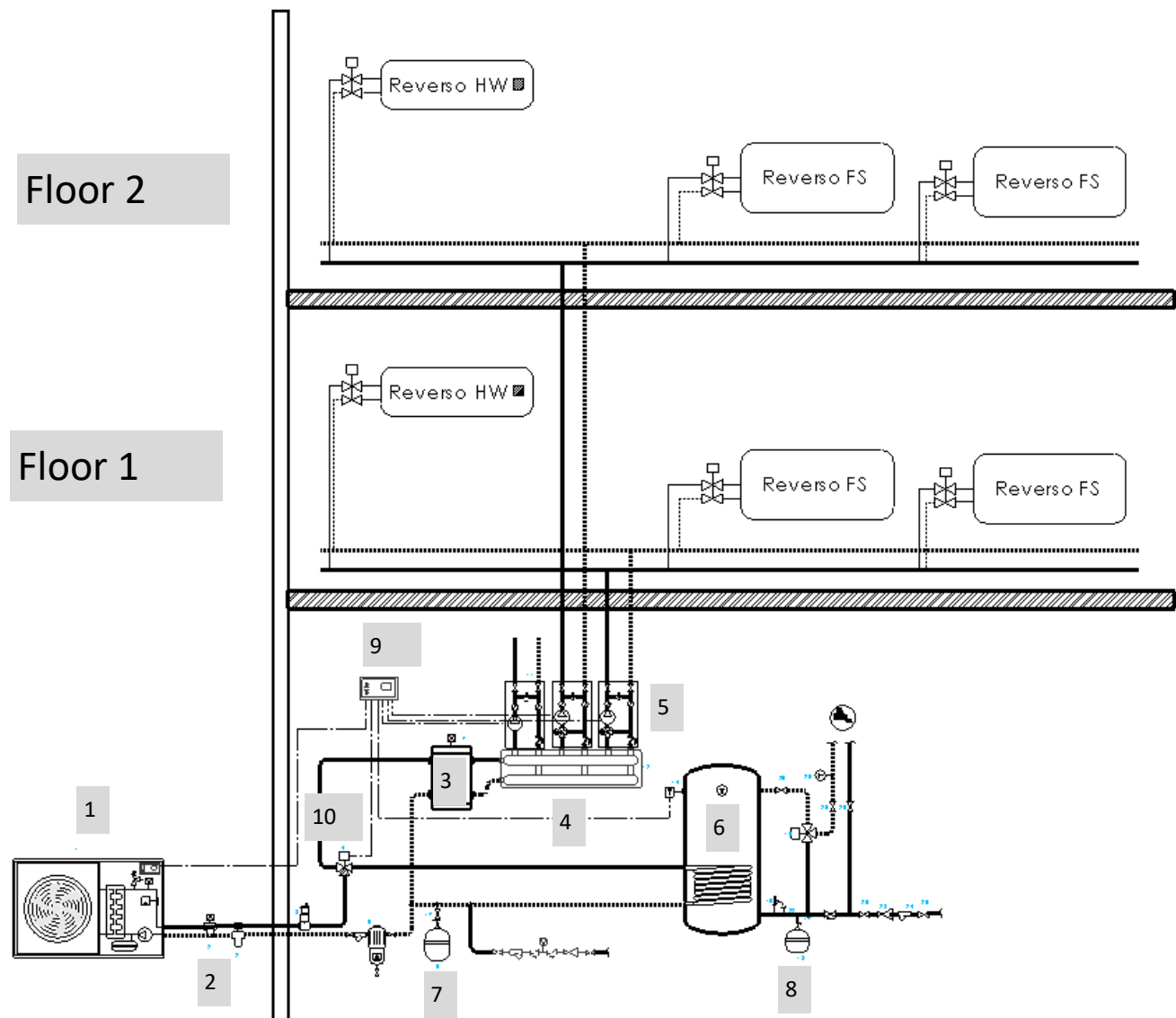
6 REASONS

to choose Reverso

1. The new House well insulated need lower capacity to cool and heat the house and the rooms
2. The HP market is growing up and Reverso is the best indoor terminal to improve HP's SCOP
3. The comfort is also low noise and low air flow speed
4. The easy installation reduce the total cost
5. Final user need good product but with good design
6. Reverso is the slimmest fan coils in the world , with DC inverter technology , low consumption , Design and low noise for real good comfort experience .

Typical installation scheme single house

Heating / Cooling / Purification / Sanitary water with air water HP + Reverso




1. Monobloc air—water heating pump
2. Valve anti freeze (if system without glycol)
3. Puffer for technical water (10 liters x 1 Kw)
4. Water collector to balance water pump pressure
5. Water pump
6. Sanitary water tank
7. Expansion vase
8. Expansion vase
9. Control
10. 3 way valve (to switch sanitary water or system to cool / heating)

Price List

08-2024


- ⇒ *Machine price list*
- ⇒ *Accessories Price list*

Reverso Floor Standing - Full Flat 2/4 Pipes Connection

Image	Model	Description	Cooling (watt) (7-12° C)	Heating (watt) (50°C)	Code	Price List (\$)
	Reverso FS 200	DC Inverter Floor standing fancoil FULL FLAT design with electronic board	880 W	1100 W	RFS 200	\$550
	Reverso FS 400		1810 W	2400 W	RFS 400	\$610
	Reverso FS 600		2700 W	3200 W	RFS 600	\$717
	Reverso FS 800		3380 W	3200 W	RFS 800	\$851

Prices include Inverter PCB but The thermostat or other controls are excluded and must be added
 Prices are for products without accessories like valve, connection pipe, wall pad thermostat
 Product could be installed with connection left or right side
 For horizontal ceiling installation, the accessory "condensate collector tray must be added
 Standard colour is silver or white

Reverso High Wall

Image	Model	Description	Cooling (watt) (7-12° C)	Heating (watt) (50°C)	Code	Price List (\$)
	Reverso HW 400	DC Inverter High Wall fancoil with electronic board and infrared handset remote control	1200 W	1680 W	RHW 400	\$670
	Reverso HW 600		1700 W	2450 W	RHW 600	\$737
	Reverso HW 800		2450 W	3300 W	RHW 800	\$804

Prices include Inverter control PCB and infrared handset remote control
 Prices are for products without accessories like valve, connection pipe, wall pad thermostat
 Standard water connection on left side and electric connection on right side
 Standard colour is silver or white

Reverso Accessories

Image	Model	Description	Note	Code	Version	Price List (\$)
COMMAND SUPPLIED IN KIT NOT MOUNTED FOR BUILT-IN AND WALL MOUNTED APPLICATION						
	CTOP - WF - 24 VAC - ON-OFF	Touch screen on board thermostat, 2T/4T, Weekly program, WiFi, App , 24 VAC - ON-OFF valves	in Kit mounted or not mounted	CTOP -ON-OFF	All version , FS series necessary , for HW it's optional	\$198
	CTOP - WF - 24 VAC - 0-10 VDC modulating	Touch screen on board thermostat, 2T/4T, Weekly program, WiFi, App , 24 VAC - ON-OFF valves	in Kit mounted or not mounted	CTOP - 0-10 VDC	All version , FS series necessary , for HW it's optional	\$198
KIT VALVE AND PIPE CONNECTION, MOUNTED OR NOT MOUNTED						
	2 way valve ON-OFF	2 way valve + pipe connection for 2 pipe system motor 24 VAC - ON-OFF	in Kit mounted or not mounted	V22RFSAMK2/6 USA	FS 200/400/600	\$161
				V22RFSAMK8 USA	FS 800	
				V22RSHAMK2/6 USA	HW 400/600	
				V22RSHAMK8 USA	HW 800	
	3 way valve ON-OFF	3 way valve + pipe connection for 2 pipe system motor 24 VAC - ON-OFF	in Kit mounted or not mounted	V23RFSAMK2/6 USA	FS 200/400/600	\$161
				V23RFSAMK8 USA	FS 800	
				V23RSHAMK2/6 USA	HW 400/600	
				V23RSHAMK8 USA	HW 800	
	3 way valve - 4 pipes ON-OFF	3 way valve + pipe connection for 4 pipe system motor 24 VAC - ON-OFF	Only Kit not mounted made in Italy	V43RFSK USA	FS 200/400/600/800	\$293
	2 way valve 0-10 VDC	2 way valve + pipe connection for 2 pipe system motor 24 VAC - 0-10 VDC signal modulating	in Kit mounted or not mounted	V0-10VDC DN15 USA	FS 200/400/600	\$225
				V0-10VDC DN20 USA	FS 800	
GENERIC ACCESSORIES						
	Feet	Kit consisting of 2 feet for floor installation	in Kit not mounted	FKR	FS 200/400/600/800	\$40,00
	Back Aesthetic panel	Back panel made in tempered silver crystal for FS (2 - 4 pipes)	in Kit not mounted	BAPRFS200	FS 200	\$70,00
				BAPRFS400	FS 400	\$75,00
				BAPRFS600	FS 600	\$80,00
				BAPRFS800	FS 800	\$100,00
	Antibacteria-Virus Filter /	Antibacteria - antivirus Filter with innonative membrane	in Kit mounted or not mounted	FILT-200	FS 200	\$80,00
				FILT-400	FS 400-HW400	\$80,00
				FILT-600	FS 600-HW600	\$85,00
				FILT-800	FS 800-HW800	\$85,00

REVERSO 361°

Design Fan coil

Zymbo Italia S.r.l.

Via Ponte Musia 23-25

25086 Rezzato (BS) - Italy

www.zymbo.eu

Phone : +39 - 030 0979701

